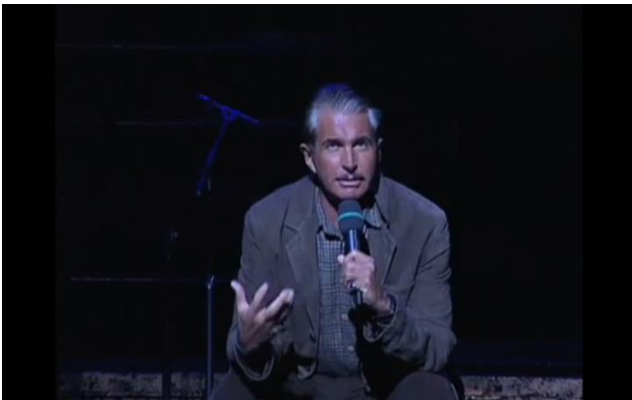


## Sample Creative Team



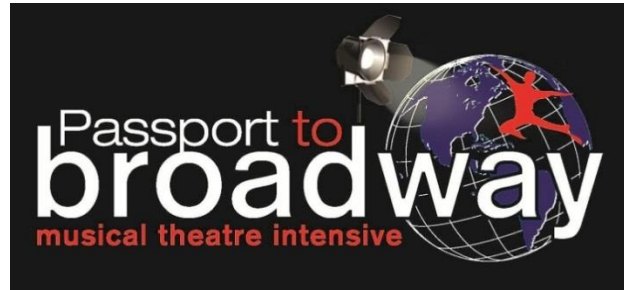
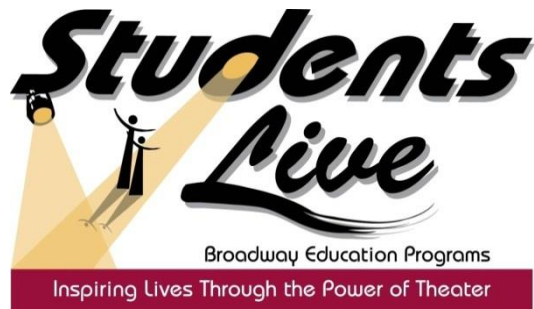
George Hamilton, Broadway and Film Actor, speaks at a **Chicago Day on Broadway**



Broadway Actresses Charlotte D'Amboise & Jasmine Guy speak at a **Chicago Day on Broadway**



Fashion Designer, Tommy Hilfiger, speaks at a **Career Day on Broadway**



## **SOME OF OUR PASSPORT TO BROADWAY CREATIVE TEAM**

### **STEPHEN BROTEBECK**



**(Choreographer)**

Mr. Brotebeck is an Associate Professor of Musical Theatre at San Diego State University in the prestigious MFA Musical Theatre program where he has directed and choreographed productions of Leonard Bernstein's *Mass*, *Company*, *Enchanted April*, *The Full Monty*, *Jesus Christ Superstar*, *The Drowsy Chaperone* (Craig Noel Award Nomination), and *On The Eve*. Mr. Brotebeck is also the Artistic Director of the Okoboji Summer Theatre in Okoboji, Iowa, where he has directed *I Ought To Be In Pictures*, *A Grand Night For Singing*, *And The World Goes 'Round* and *The Spitfire Grill*. On Broadway, Stephen served as the Movement Associate on the Tony® Award winning production of *Peter and the Starcatcher* and also the Off-Broadway transfer to New World Stages, choreographed by Steven Hoggett. In addition he served as an Assistant Director on the Broadway premiere of *Ghost The Musical*, directed by Matthew Warchus. As a Director and Choreographer, Stephen's credits include *Enchanted April* (Co-Director and Choreographer) at Arena Stage in Washington D.C., *My Fair Lady*, *Camelot* and *Children of Eden* (Associate Director/Choreographer) at The Kennedy Center, and The 2012 and 2013 Great American Songbook Hall of Fame Ceremonies presented by Michael Feinstein, honoring Liza Minnelli, Rita Moreno, Jimmy Webb, Cole Porter, Marilyn and Alan Bergman, Barry Manilow and Frank Sinatra (Director and Choreographer).

### **SCOTT DIFFORD**



**(Choreographer)**

Scott Difford was last seen in *Matilda the Musical* on Broadway. His other credits include: *A Christmas Carol* at Madison Square Garden, the tours of *Memphis* (1<sup>st</sup> National) and *Ragtime*, Pittsburgh Civic Light Opera's productions of *Miss Saigon*, *Cats*, *White Christmas*, and *Oklahoma*; *Joseph...Dreamcoat* (Theater of the Stars, Ogunquit Playhouse, and Mountain playhouse); *The Producers* (Riverside Theatre); *High School Musical* (WVPT); and flipping around as a New York Knicks Acrobatic Tumbler.

### **GABRIELA GARCIA**



#### **(Choreographer)**

Gabriela Garcia is an artist dividing her time between the theater, dance, commercial and education industries. Most recently she was a cast member of the musical *Half Time* directed and choreographed by Jerry Mitchell. She was also Movement Associate for the production of *Sweeney Todd* at the Barrow Street Theater and is a former cast member and dance captain for *CHICAGO - The Musical* on Broadway, Mexico City and Vienna. As a voiceover actor, her voice can be heard in numerous TV commercials and radio spots for the US national Hispanic market as well as Spanish language audio books. Film credits include: *Whatever Lola Wants* (Tribeca film festival) and *Enchanted*. TV: "Jessica Jones." Her theater dance classes have reached schools in Sweden, Peru, Mexico and other countries. Gabriela holds a BA in Performing Arts from Saint Mary's College of California, and is Co-Founder and Director of *R.Evolución Latina (RL)*, a nonprofit organization making a difference through the arts.

### **ANDY PETERSON**



#### **(Musical Director and Arranger)**

Andy is a New York based composer, musical director, arranger and orchestrator who is currently the Associate Musical Director for the new Broadway show **Tootsie**. Born and raised in Australia, Andy began his training in music at the late age of 15, taking quickly to the piano and composition. He holds a Bachelor of Music (Composition) from the Sydney Conservatorium of Music. He has worked with Broadway performers such as Alice Ripley, Jeremy Kushnier, Sara Gettlefinger, Euan Morton, Randy Harrison, David Abeles, Natasha Williams, Brian Ogilvie and Thos Shipley and has been mentored by Broadway orchestrator Christopher Janhke (*Legally Blonde*, *Les Miserables*, *Memphis*, *The Gershwins' Porgy and Bess*). He has played and conducted in international venues such as the Sydney Opera House, Beijing Exhibition Centre, Australian Parliament House & Kula Lumpur Performing Arts Centre. Andy's musical director/orchestrator/arranger credits include: New York: *Atomic*, *Connections*, *The Severed Hand of Neverland*. Asia: *Sinbad: The Musical*, *Kiss Me*, *Kate*. Australia: *Atomic*, *Bare*, *Pippin* and *A Chorus Line*.

**SETH WEINSTEIN**



**(Musical Director and Arranger)**

**Seth Weinstein** was the musical director and composer of the Off-Broadway musical *How to Save the World and Find True Love in 90 Minutes* (New World Stages, 2006). He has toured internationally with Fosse and Ivan Jacobs's *The Phantom of the Opera* and in the USA with *Almost Heaven: Songs of John Denver*. Regionally, he has been the musical director of *Black House* (Zagreb, Croatia), *Do I Hear a Waltz?* (Arvada Center), *Smokey Joe's Cafe* (Connecticut Repertory Theatre), and *Chick Flick* (Loft 227 and Millbrook Playhouse), among other shows. Seth also wrote and recorded "The Chagall Suite" (an eight-movement piano piece based on themes of Marc Chagall's artworks) and "Conversations" (a musical meeting between Chagall and Elvis Presley), and he has played the pieces in France, Germany, and the USA. He performs monthly with L'Opera Burlesque and he is the pianist for the MAC and Bistro Award-winning *Screen Gems: Songs of Old Hollywood* (featuring Sarah Rice) and *Operation Opera* (baritone Adelmo Guidarelli's amusing tribute to opera, a participant in the 2011 Edinburgh Festival Fringe).

**MATTHEW RUSSELL**



**(Musical Director & Arranger)**

Matthew J Russell has had a varied musical career which has literally taken him all around the world. As a performer he has played in a variety of settings including chamber orchestras, rock bands, big bands and theatre pits. He has been Music Director in over half a dozen shows and has performed in dozens more. As a teacher he has taught at both The Crane School of Music at SUNY Potsdam as well as Lake Michigan College at Benton Harbor. Matthew was able to travel to all 7 continents as a music director on cruise ships where he worked with performers including pop star Melissa Manchester and Broadway Star Dale Kristien.

## CATHERINE VAUGHN



### (Vocal Teacher)

Catherine Vaughn is a Broadway veteran, cabaret artist and teacher who hails from Los Angeles but makes her home in New York City. Catherine made her Broadway debut in “Do Black Patent Leather Shoes Really Reflect Up?”. She played opposite Anjelica Huston in the Los Angeles production of “Tamera”, and she was in the national tour of *Beauty and the Beast*, and the Los Angeles production of “CATS”. She received a Drama-Logue Critic’s Award for her portrayal of Eve in “*Evita*”, in Los Angeles and she has played Norma Desmond in “*Sunset Blvd*” at Cohoes Music Hall, New York. She has performed at regional theaters such as The Goodspeed Opera House and The Walnut Street Theater. She is a company member of The Hippodrome Theater of Gainesville, Florida and an advisory board member at Central Alabama Theater. In 2019, Catherine performed her cabaret at Feinstein’s at Viotello’s in Los Angeles. Catherine teaches Musical Theater Master Classes around the country, as well as private voice and acting for children and adults.

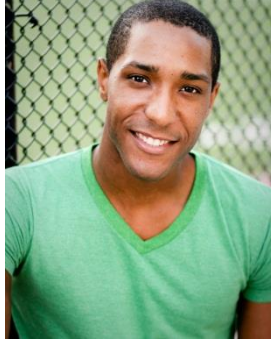
## SUSANNA VAUGHAN



### (Teaching Artist)

Susanna Vaughan is a professional performer and educator based in Los Angeles. She received a Master of Fine Arts degree in Musical Theatre from San Diego State University, where she also taught acting and musical theatre history. She now teaches at Fullerton College in the musical theatre program and continues to perform, direct, and choreograph in the greater Los Angeles area. Some performance credits include *She Loves Me* (Amalia), *The Wedding Singer* (Julia), *Singin' in the Rain*, *Hairspray*, and *The Little Mermaid*. She is also an avid traveler and loves learning about other countries and cultures.

### CORNELIUS BETHEA



#### (Teaching Artist)

Cornelius Bethea has toured the U.S., Canada and Asia with *Chicago* as Swing and Mary Sunshine understudy. Aside from performing, he cherishes his chances to nurture future talent working with such programs as StudentsLive! in New York City, Rising Stars in Boston, Broadway Connection on tour and as guest choreographer for Stratford High School in Stratford, CT. An avid reader, writer and knitter, Mr. Bethea is thrilled to share this experience with you.

### CHRISTIE LYNN DEVOE



#### (Teaching Artist)

Christie Lynn Devoe has performed regularly in the NYC area in musical theatre, theatre, opera, television, and film. A long-time veteran of sketch comedy and improv, she has played venues like Madison Square Garden's Comedy Garden and the Original Improv Comedy Club. As a vocalist she has been seen at NJPAC singing with the New Jersey Symphony. She appeared in the film, *Bamboo Shark*, with Mickey Rooney. She holds a M.M. in Musical Theatre Vocal Performance as well as an Advanced Certificate in Vocal Pedagogy from NYU. She maintains an active studio of voice students in both NYC and Montclair, NJ.

### KELLY FEUSTEL



#### (Stage Manager)

**Kelly Feustel** has been a part of the StudentsLive family since 2009, having worked on many events and workshops through several of StudentsLive's wonderful programs, including *Passport to Broadway*. Kelly has also worked as a Production Manager, Stage Manager, Event Planner, and Theatrical Electrician in many venues across the country. Previous Stage Management credits include *The Radio City Christmas Spectacular*

& *The New York Spectacular* [Radio City Music Hall], *Stalker: the Musical* [NY Fringe]; *In the Bar of a Tokyo Hotel* [New World Stages]; *Atomic* [Theater Row]; *How Deep is the Ocean?* [NYMF]; *The Inexplicable Redemption of Agent G* [MaYi/Vampire Cowboys]. *The Sluts of Sutton Drive* [Ensemble Studio Theatre]; *From Breast Cancer to Broadway* [Cherry Lane Theatre]; *Cut* [The Management]; *My Heart in a Suitcase* [National Tour – Artspower]; and *Tommy* [Baystreet Theatre].

**JEN ASH**

**(Stage Manager)**

Broadway: *Wicked*, *Dear Evan Hansen*, *Come From Away* Tours: *Come From Away*, *IF/THEN*, *Wicked*, *Peter and the Starcatcher* Off-Broadway: *Fuerza Bruta WAYRA*, *Peter and the Starcatcher*, *Satchmo at the Waldorf*, *Brigadoon* . Regional: *Passing Through* (Goodspeed), *Austen's Pride* (ACT), *Honeymoon in Vegas*, *South Pacific*, *Grease* (Paper Mill Playhouse) TV: Various shows and concerts for VH1 and MTV networks, and events for Arts Brookfield NYC. Upcoming: *Reefer Madness The Musical*